

TapMate Plugin

[Vers 1.2.0.0 © EddyCurrent 2016]

Purpose

This plugin for CamBam is intended to allow the addition of circles and points to a CamBam drawing. Circle and point parameters are obtained from data shown in the tab grid views and are added by the simple click of a button.

Installation

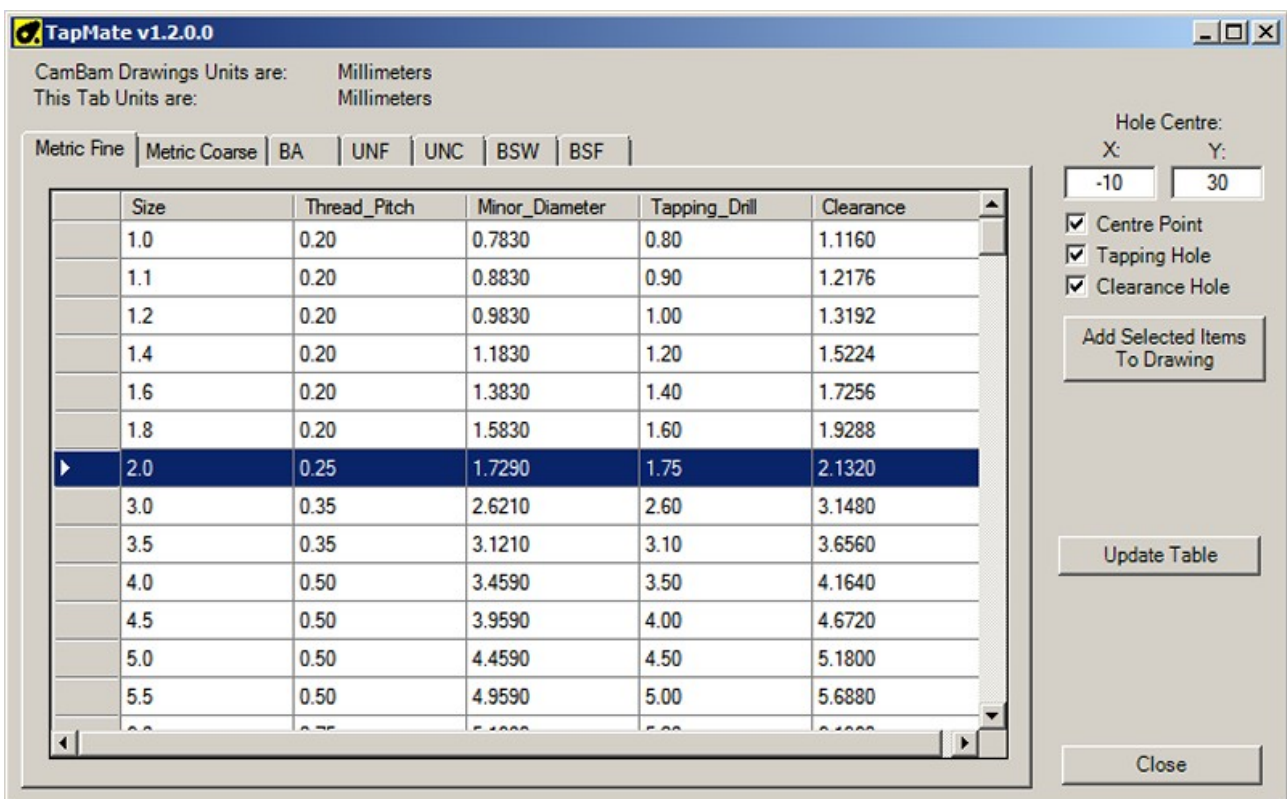
The TapMate.dll file should be placed into CamBam's Plugins folder. On re-start the plugin will be found in the CamBam Plugins menu.

Data Requirements

An XML file is created in the CamBam System Folder, this file is maintained by the plugin to always be up to date as new tabs of information are added. It does this by reading a version number from the XML file.

User Interface

This is the user interface:



The fields are:

- "*CamBam Drawing Units are*": This shows the units chosen by the user for their CamBam session. If the CamBam units are changed while the plugin is active, the plugin will have to be closed and reopened.

- *"This Tab Units are"*: This shows the units of the data within the currently open tab grid view.
The plugin will automatically convert sizes, for example;
If CamBam's units were inches and a metric bolt was selected, the plugin would convert the mm sizes to inches, and vice versa for CamBam metric units and inch bolts.
- *Tabs*: Each tab represents a different type of bolt or screw.
The grid view within each tab holds data for each bolt size.
Selection of a row of data is achieved by clicking in the appropriate grey box to the left of each row.
- *Hole Centre*: Enter the X,Y coordinates for the desired centre point of the circles and points.
- *Radio Buttons* : Check the items that shall be added to the CamBam drawing.
 1. Centre Point (could be used for a drilling operation)
 2. Tapping Hole (circle represents the tapping hole diameter)
 3. Clearance Hole (circle represents a clearance hole diameter)

The circles could be used for a spiral drilling operation.

- *"Add Selected Items To Drawing" button*: Once a line of data has been selected from the tab grid view and the required drawing elements have been chosen by the radio buttons, this button can be clicked to add the circles and point to the CamBam drawing.
- *"Update Table" button*: Individual values within the tab grid view can be edited or extra rows added to the end. If these values have been edited it is essential to then click this button in order to update the XML file.
Note: If a new version of the plugin is released it will overwrite these edited values.
Either keep a note of the changes yourself or have the data amended in the plugin by posting a message on the CamBam forum.